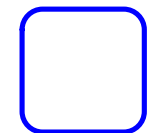
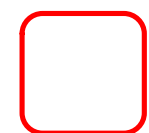
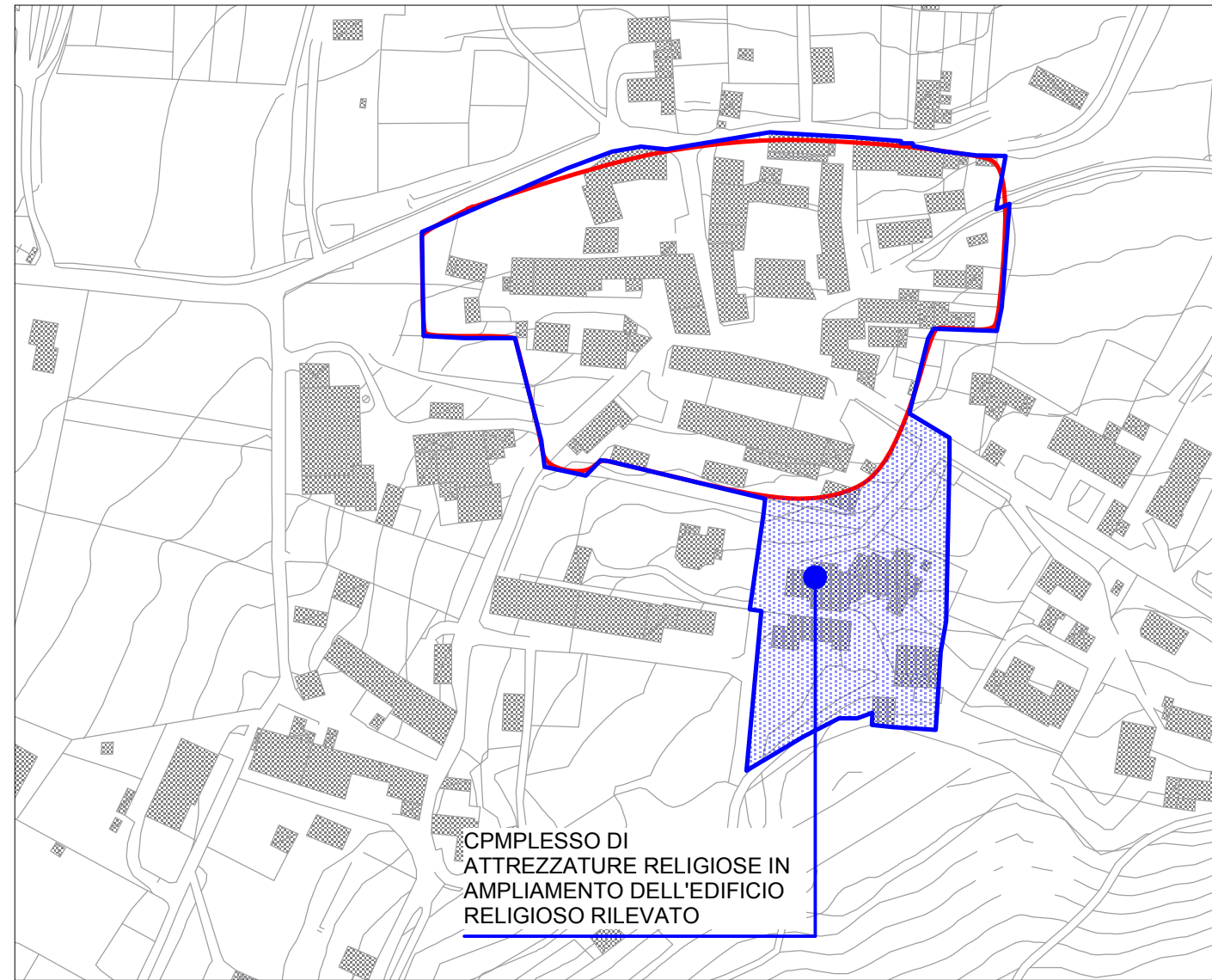
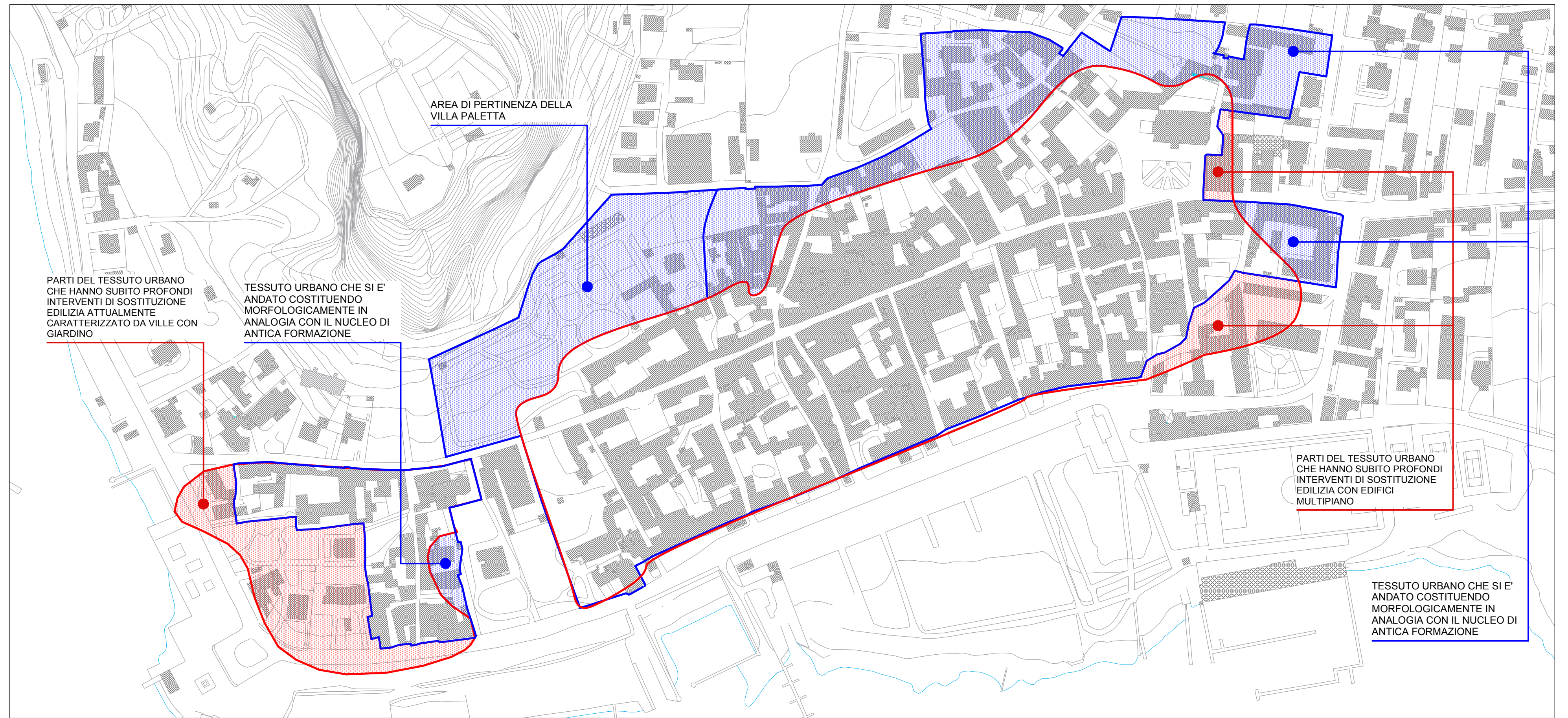


LEGENDA

-  PERIMETRO DEI NUCLEI DI ANTICA FORMAZIONE
-  NUCLEI DI ANTICA FORMAZIONE DA PRIMA LEVATURA IGM

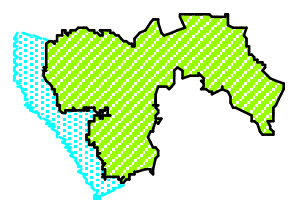


2. CAPRONNO
scala 1:2.000



1. CENTRO
scala 1:2.000

Città di Angera



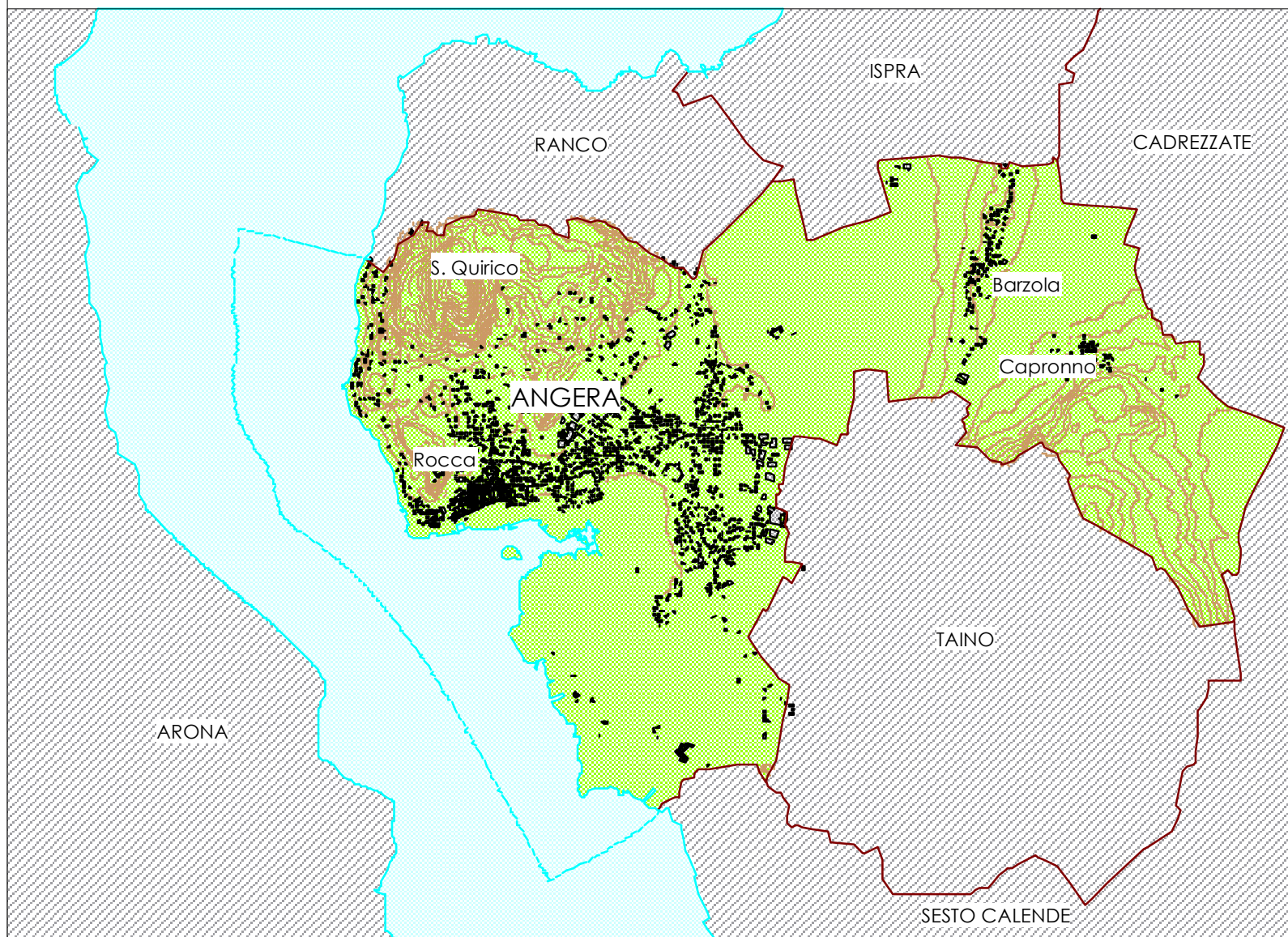
PIANO DI GOVERNO DEL TERRITORIO

Piano delle Regole
L.R. 12/05 art. 10

RICONOSCIMENTO DELLA VALENZA STORICA DEGLI INSEDIAMENTI

IGM prima levatura (1886)

PGT



Inquadramento generale
scala 1:25.000

progettisti
Claudio Scillieri architetto
Silvia Ghiringhelli architetto

elaborato
PR 3.1

marzo 2009